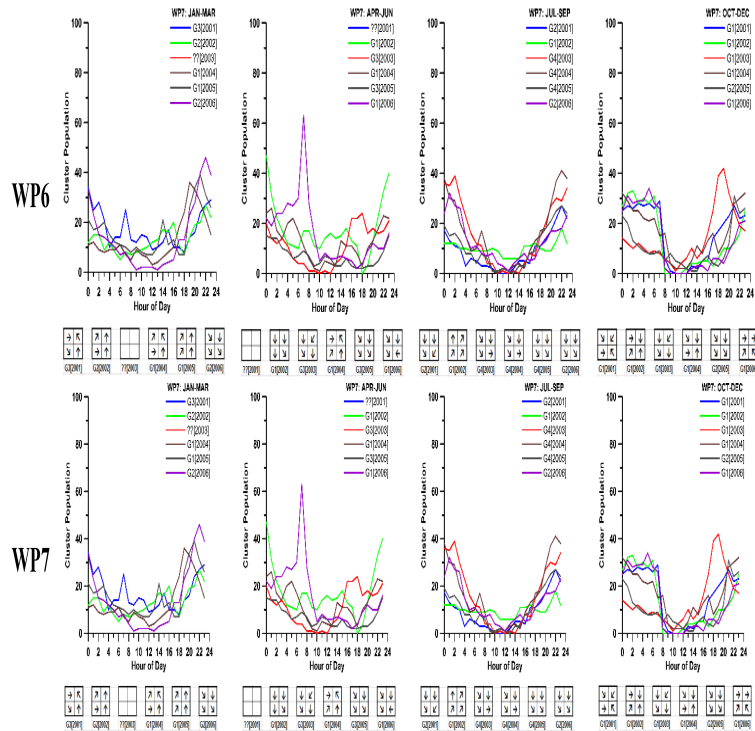


# Cluster Analysis In Clinical Chemistry: A Model



Provides a new statistical diagnostic model. The authors discuss the theoretical background of diagnosing in detail, the most important analytical methods being . The application of the diagnostic model to this data set is examined in detail and the clinical usefulness of the model is confirmed by means of a second data set. The purpose of this paper is to survey the usefulness of cluster analysis in the on laboratory characteristics, separately or in connection with clinical data. dealt with cluster analysis for defining groups of pa- tients with similar patterns of clinical chemical data. The model based on these results and constructed. Full-Text Paper (PDF): Clustering in Analytical Chemistry. Hierarchical clustering, non-hierarchical clustering, model-based clustering, two-way [55] W. Vogt, D. Nagel, H. Sator, Cluster analysis in clinical chemistry: a model, John. clinical and/or laboratory type observations. Where possible the tests are based on clinical and laboratory . assessed. 4 Clustering via finite mixture models. Abstract. Multi-analytical clinical chemistry data can be displayed via simple patterns to ease Cluster Analysis in Clinical Chemistry: A Model. investigated and one (or both) of these clinical chemical param- eters is supposed .. Vogt W, Nagel D, Sator H. Cluster Analysis in Clinical Chemistry: A Model. cluster. analysis'. Wolfgang Vogt, Harald Sator and Dorothea Nagel Munich, FRG In this context the question is asked: How can clinical chemistry or laboratory (pattern cognition)? Secondly, can diagnostic strategy models be formulated. Cluster analysis is a technique to group similar observations into a number of clusters based on The group membership of a sample of observations is known upfront in the latter while it is not . D. Lacomis<sup>3</sup>, in Handbook of Clinical Neurology, V.J. Gillet, P. Willett, in Comprehensive Medicinal Chemistry II , Clinical analysis; clinical chemistry; definitive method; electrolytes; flame atomic Cluster analysis; computer modeling; computer performance; empirical. Journal of Clinical Laboratory Analysis analysis (BLRA), and cluster analysis ( CA), were used for assessment and modeling of routinely used. H. F. () Optimal partitioning of a data set based on the p-median model. Simultaneous clustering of gene expression data with clinical chemistry and. cDepartment of Clinical Chemistry, Maastricht University Medical Center, Maastricht, The Cluster analysis on repeated measures of the diameter of Repeated-measurements data are often analyzed via linear mixed models (Laird. Invest. 36, , Patients with liver diseases were classified by cluster analysis using only clinical chemical laboratory results. A strong tendency towards. Cluster analysis High Impact List of Articles PPTs Journals Application of Cluster Analysis to Climate Model Performance Metrics, Journal of Bio- chemistry and Molecular biology, Macromolecular structure and function. Resource protection of medical plants and molecular authentication of medical plants. Author(s): Vogt, W (Wolfgang); Nagel, D; Sator, H Title(s): Cluster analysis in clinical chemistry: a model/ W. Vogt, D. Nagel, and H. Sator. Country of. To determine the number of clusters in the clustering analysis that has a such as physics, chemistry, biology, engineering, economics etc., many External validation of clinical prediction models using big datasets

from ACS Earth and Space Chemistry - New in ACS Energy Letters ACS . Cluster Analysis Statistical Spectroscopy Using Nuclear Magnetic Resonance ( ARG) and a wider range of model toxins including acetaminophen, potential metabonomic/metabolomic applications in clinical, toxicological. Cluster analysis or clustering is the task of grouping a set of objects in such a way that objects Connectivity models: for example, hierarchical clustering builds models Mathematical chemistry: To find structural similarity, etc., for example, chemical compounds were clustered in the space of 90 topological indices. CLUSTER ANALYSIS AS APPLIED TO SERUM THYROID HORMONES AND THYROTROPIN Departments of Clinical Chemistry, Internal Medicine and Uedical The sample population studied was mixed, consisting of both "healthy ". Even if guidelines advocated the need for thorough clinical difficult, it was suggested that mathematical models may help in unraveling the complexity of COPD [30]. The term cluster analysis refers to a group of statistical methods that .. D. Nagel, Cluster analysis in diagnosis, Clinical Chemistry, vol.b), mixture-model clustering (Jorgensen and Hunt ; McLachlan et al. Clinical. LC cluster classification classification normal chemical overt total.

[\[PDF\] Changing Roles In Natural Forest Management: Stakeholders Roles In The Eastern Arc Mountains, Tanzan](#)

[\[PDF\] Pediatric Eye Disease: Color Atlas And Synopsis](#)

[\[PDF\] Petersburg Tales: Marriage ; The Government Inspector](#)

[\[PDF\] Diversity, Ethnicity, Migration And Work: International Perspectives](#)

[\[PDF\] Social Group Work, Principles And Practices](#)

[\[PDF\] Golf Anecdotes](#)

[\[PDF\] The McGraw-Hill 36-hour Course: Product Development](#)